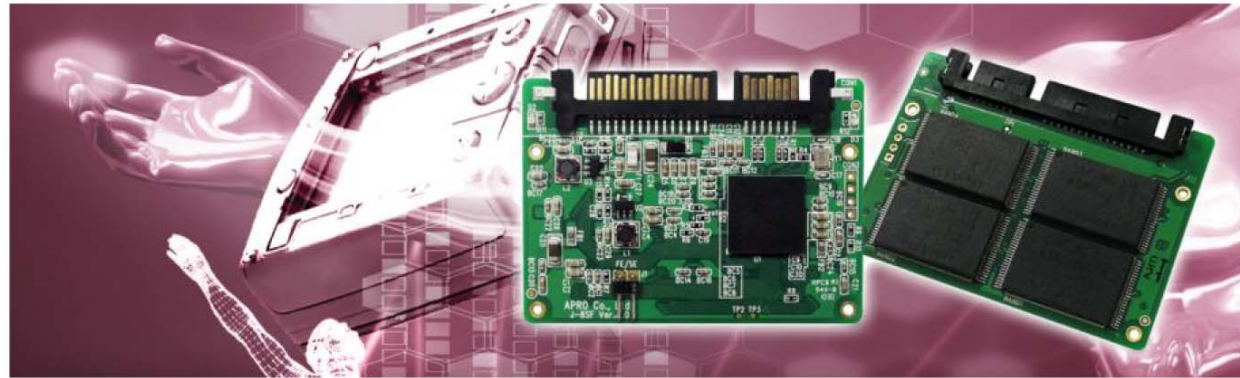


# BON Series

**Industrial 1.8" Slim Lite SATA II SLC SSD supports Fast Erase and Secure Erase**



## Product features

- ❑ SLC - NAND type flash technology
- ❑ Support Fast Erase by Hardware and Software definition
- ❑ 1.8" Slim Lite SATA II SSD compatible with JEDEC Standard: MO-297A physical specification
- ❑ Support Secure Erase by Software ATA command vendor code
- ❑ Compliant with SATA 1.0a and SATA 2.6 specification
- ❑ Maximum sequential read speed 106.3MB/sec
- ❑ Maximum sequential write speed 100.4MB/sec
- ❑ Capacity from 4GB up to 32GB

## Product specifications

<b>Compatibility</b>	❑ SATA 1.0a and SATA 2.6 specification compliance	<b>Power consumption</b>	Power requirement ❑ +5V ± 10%
	❑ 1.8" Slim Lite SATA II SSD compatible with JEDEC Standard: MO-297A specification	Reading mode	❑ 230mA (Max.)
<b>Flash technology</b>	❑ SLC-NAND type flash based	Writing mode	❑ 270mA (Max.)
<b>Host Interface</b>	❑ Standard SATA 7-pin (data) + 15-pin (power)	Sleeping mode	❑ 160mA (Max.)
<b>Performance</b>		<b>Reliability</b>	
Data transfer rate	❑ Serial ATA Gen-I (1.5Gbits) and Gen-II (3.0Gbits)	Wear-leveling	❑ Static wear-leveling algorithms
Sequential read	❑ 106.3MB/sec (Max.)	MTBF	❑ > 3,000,000 hours
Sequential write	❑ 100.4MB/sec (Max.)	ECC	❑ 8 bits or 15 bits per 512bytes block
Random access time	❑ 0.2ms	Endurance	❑ > 2,000,000 cycles
<b>Environmental specification</b>		Data retention	❑ 10 years
Operating temp.	❑ STD. 0°C ~ 70°C / IND. -40°C ~ +85°C	<b>Physical specification</b>	
Non-operating temp.	❑ STD. -20°C ~ +80°C / IND. -50°C ~ +95°C	Weight (max.)	❑ 15 g ± 2 g / 0.53 oz.
Humidity	❑ 10% ~ 95% non-condensing	Dimension(W x L x H)	❑ 54.00 x 40.10 x 5.45 (mm)
Vibration	❑ 15G compliance to MIL-STD-810F	<b>Conformal coating</b>	❑ Option for special request
Shock	❑ 1,500G compliance to MIL-STD-810F	<b>Warranty</b>	
Altitude	❑ 70,000 feet	Standard grade	❑ 3 years
<b>Functionality</b>		Industrial grade	❑ 5 years
Hardware	❑ Fast Erase the media data by hardware trigger		
Software	❑ Fast Erase the media data by ATA command vendor code Secure Erase the media data by ATA command vendor code		
Sanitization Procedure	❑ Default sanitizing by erase block data to 0xFF on file table for Fast Erase Sanitizing Based on NSA Manual 130-2 for Secure Erase Sanitizing Based on USA Air Force AFSSI 5020 for Secure Erase		



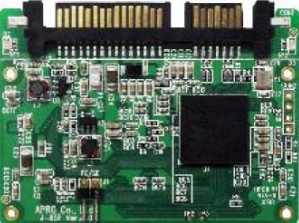
2, rue Jean Mermoz - TREMBLAY EN FRANCE - 93290  
tél: +33 (0)1 48 61 95 28 - fax: +33 (0)1 48 61 94 03  
http://www.naelcom.com - APRO-Flash@naelcom.com



Advanced Performance & Rugged Orientation

Operating temperature supports Standard grade 0°C ~ 70°C and Industrial grade -40°C ~ +85°C

Part number list - Industrial 1.8" Slim Lite SATA II SLC SSD supports FE/SE

Product Picture	Capacity	0°C ~ 70°C	-40°C ~ +85°C
	<b>4GB</b>	SB8SJ004G-JACSC-UFE(USE)	WB8SJ004G-JAISI-UFE(USE)
	<b>8GB</b>	SB8SJ008G-JACSC-UFE(USE)	WB8SJ008G-JAISI-UFE(USE)
	<b>16GB</b>	SB8SJ016G-JACSC-UFE(USE)	WB8SJ016G-JAISI-UFE(USE)
	<b>32GB</b>	SB8SJ032G-JACSC-UFE(USE)	WB8SJ032G-JAISI-UFE(USE)

## Remarks:

**UFE - Hardware and software ATA command code for Fast Erase function**

USE - Secure Erase Procedure by Project Base

## Part number decoder

X1 X2 X3 X4 X5 X6 X7 X8 X9 — X11 X12 X13 X14 X15 — Z1 Z2 Z3 C

## Example

S B 8 S J 0 3 2 G — J A C S C — U F E

**X1** ❑ Grade

**S** : Standard grade operating temp. 0°C ~ 70°C  
**W** : Industrial grade operating temp. -40°C ~ +85°C

**X13** ❑ Controller grade

**C** : Commercial grade  
**I** : Industrial grade

**X2** ❑ The material of casing

**B** : Bare (without casing)

**X14** ❑ Flash IC

**S** : Samsung SLC-NAND flash IC

**X3 X4 X5** ❑ Product category

**8SJ** : 1.8" Slim Lite SATA II SSD

**X15** ❑ Flash IC grade

**C** : Commercial grade  
**I** : Industrial grade

**X6 X7 X8 X9** ❑ Capacity

**004G** : 4GB      **016G** : 16GB

**008G** : 8GB      **032G** : 32GB

**Z1 Z2 Z3** ❑ Special function

**UFE** : Hardware and software ATA command code for Fast Erase function  
**USE** : Secure Erase procedure by project base

**X11** ❑ Controller

**J** : JMicron (BON Series supports FE/SE)

**C** ❑ Reserved for specific requirement

**X12** ❑ Controller version

**C** : Conformal-coating

A,B,C.....